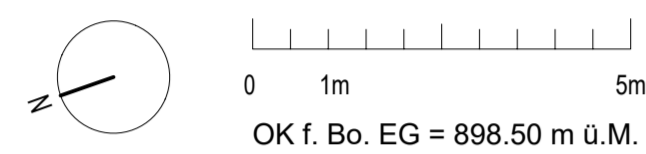
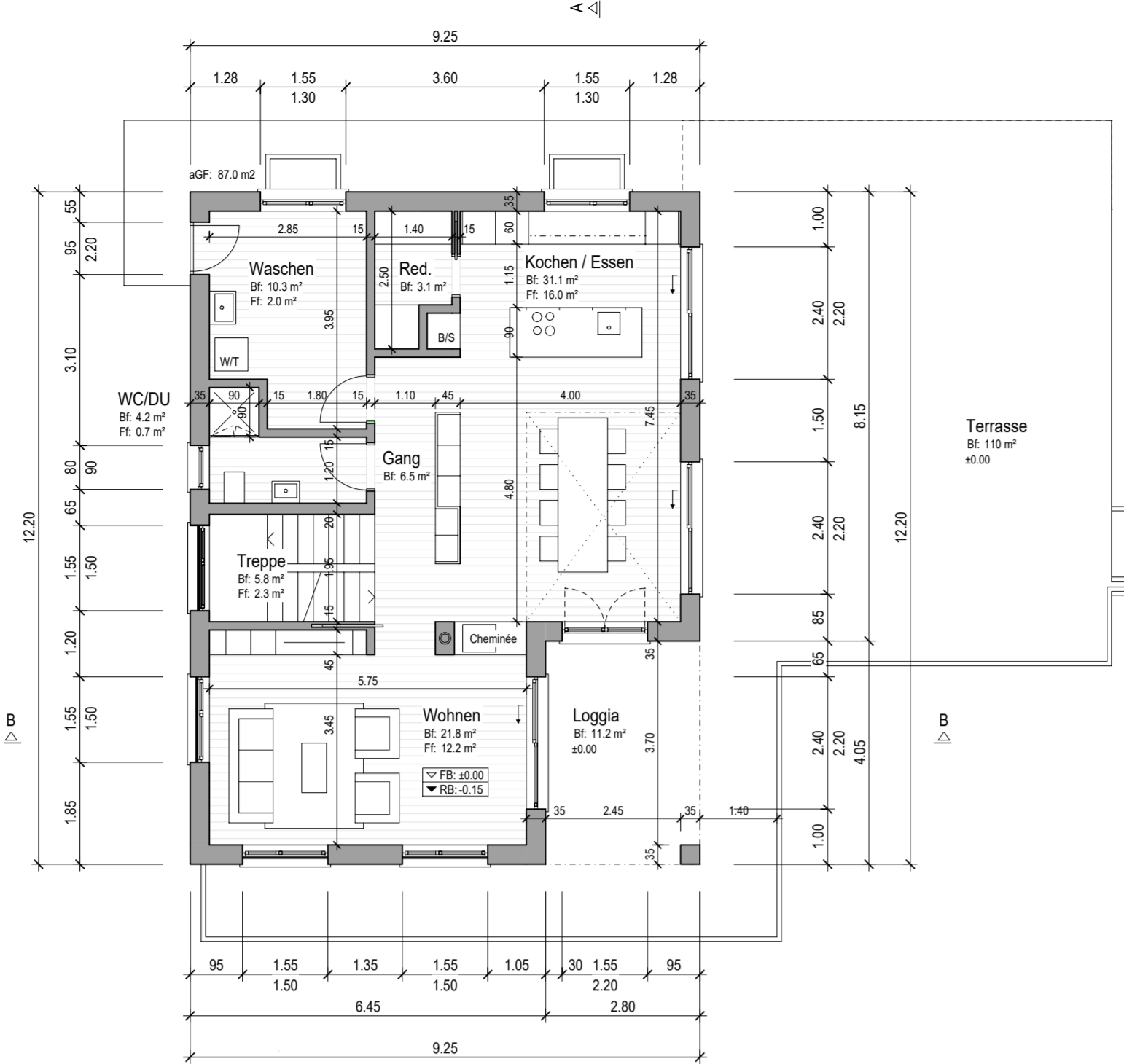


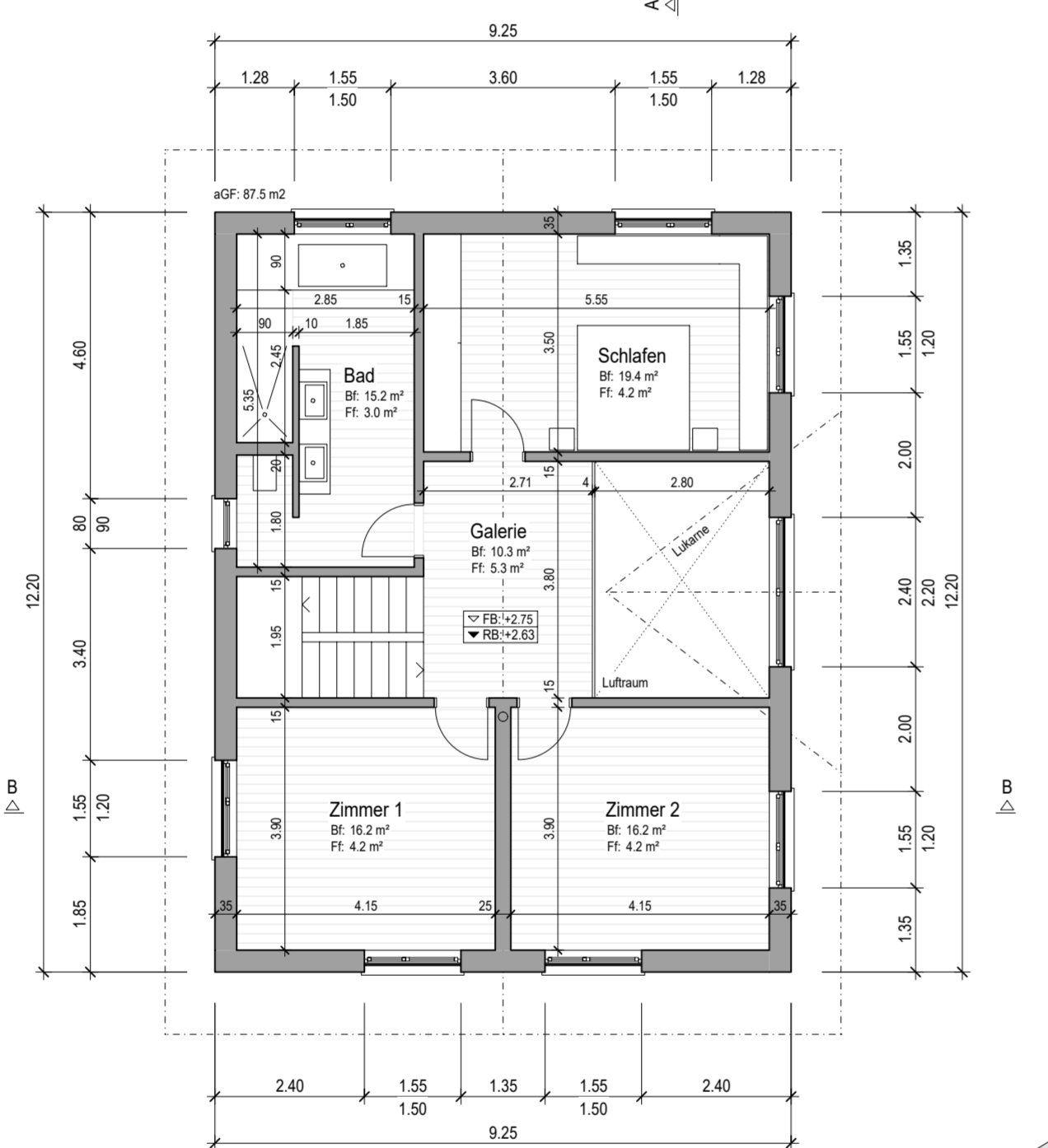
BAUHERR:	Konrad & Selina Bucher-Rössli Glashütten 1 6173 Flühli		
OBJEKT:	Neubau EFH Sagelboden 2, Parz. 2743 6173 Flühli		
BEZEICHNUNG:	Baueingabe MST 1 : 100 Grundrisse, Querschnitte, Fassaden		
PLAN NR: 02	GROSSE: 120 x 60	GEZ: esch	GEZ: 13.09.2022
REV:	REV:	REV:	REV:



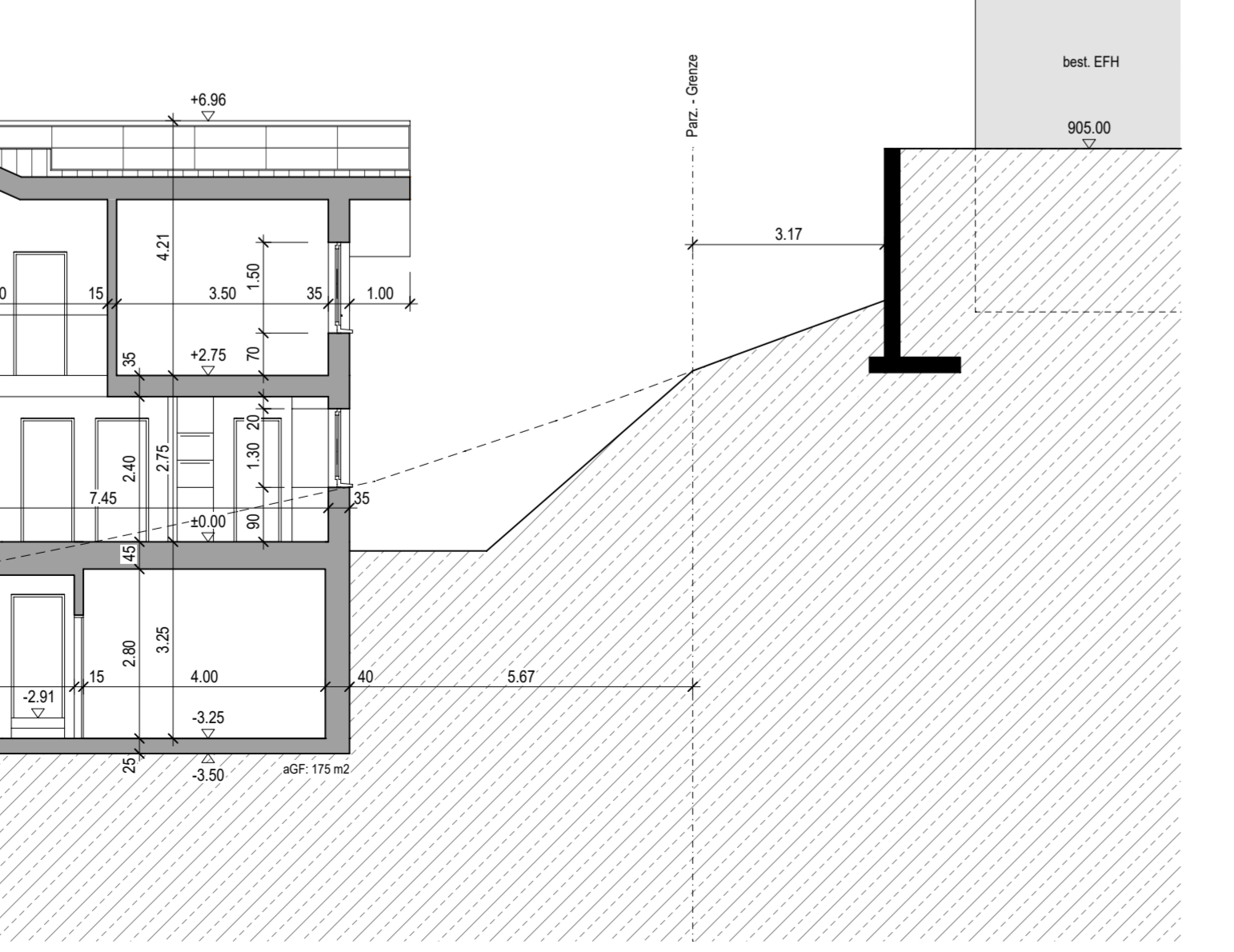
6166 Hasle, den
 Die Bauherrschaft und
 Grundstückseigentümer:
 Der Architekt:



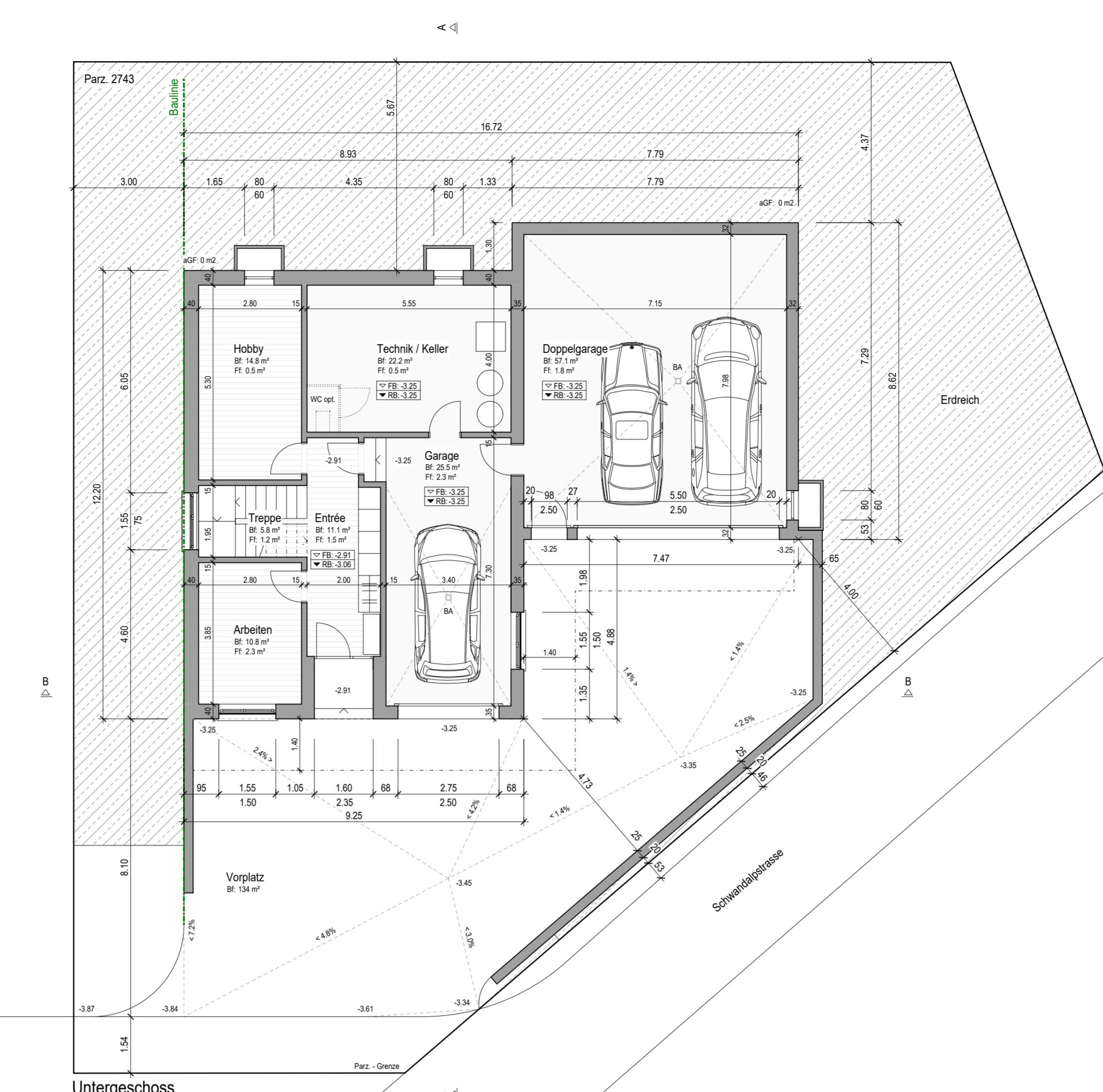
Erdgeschoss



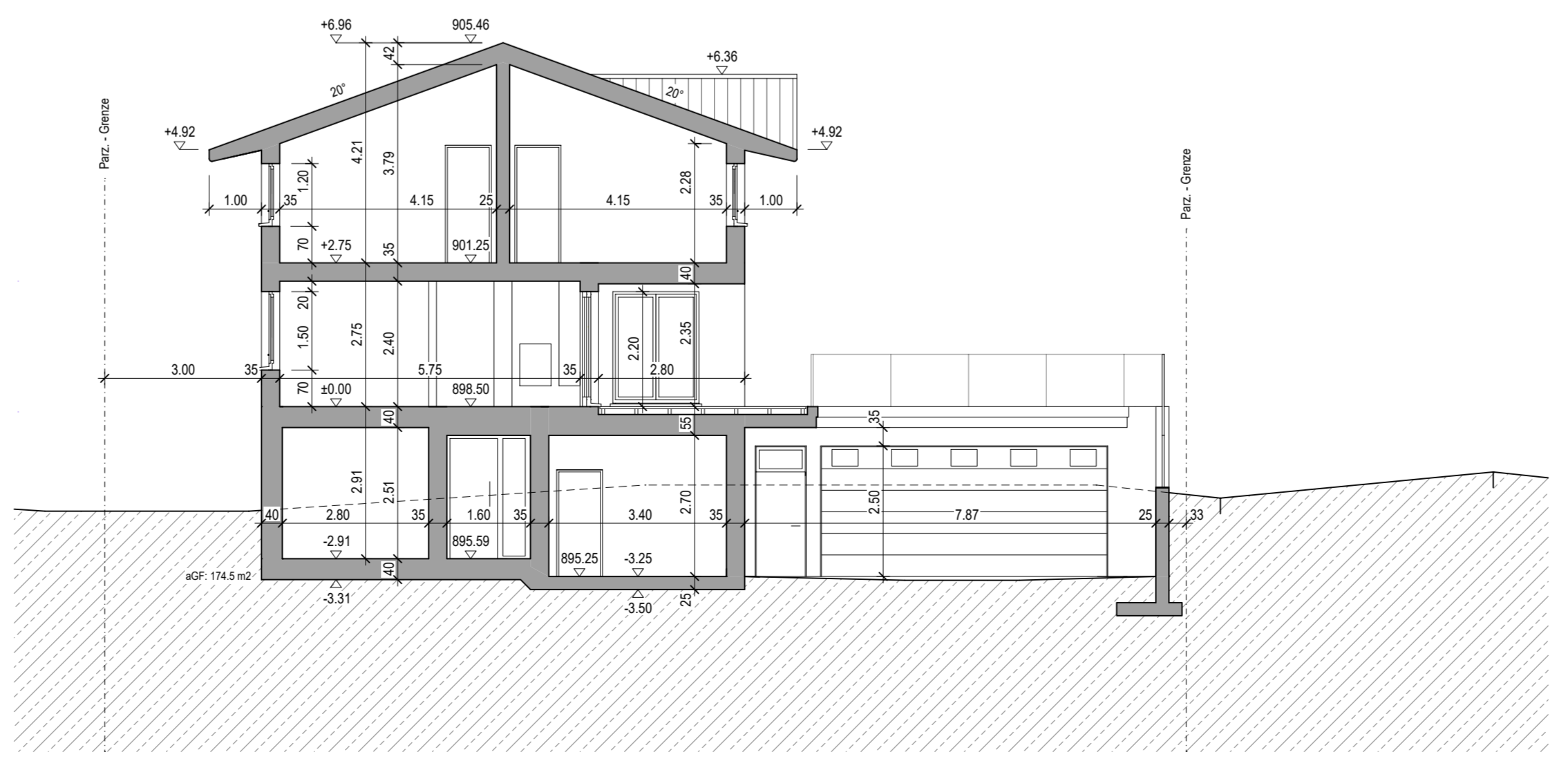
Dachgeschoss



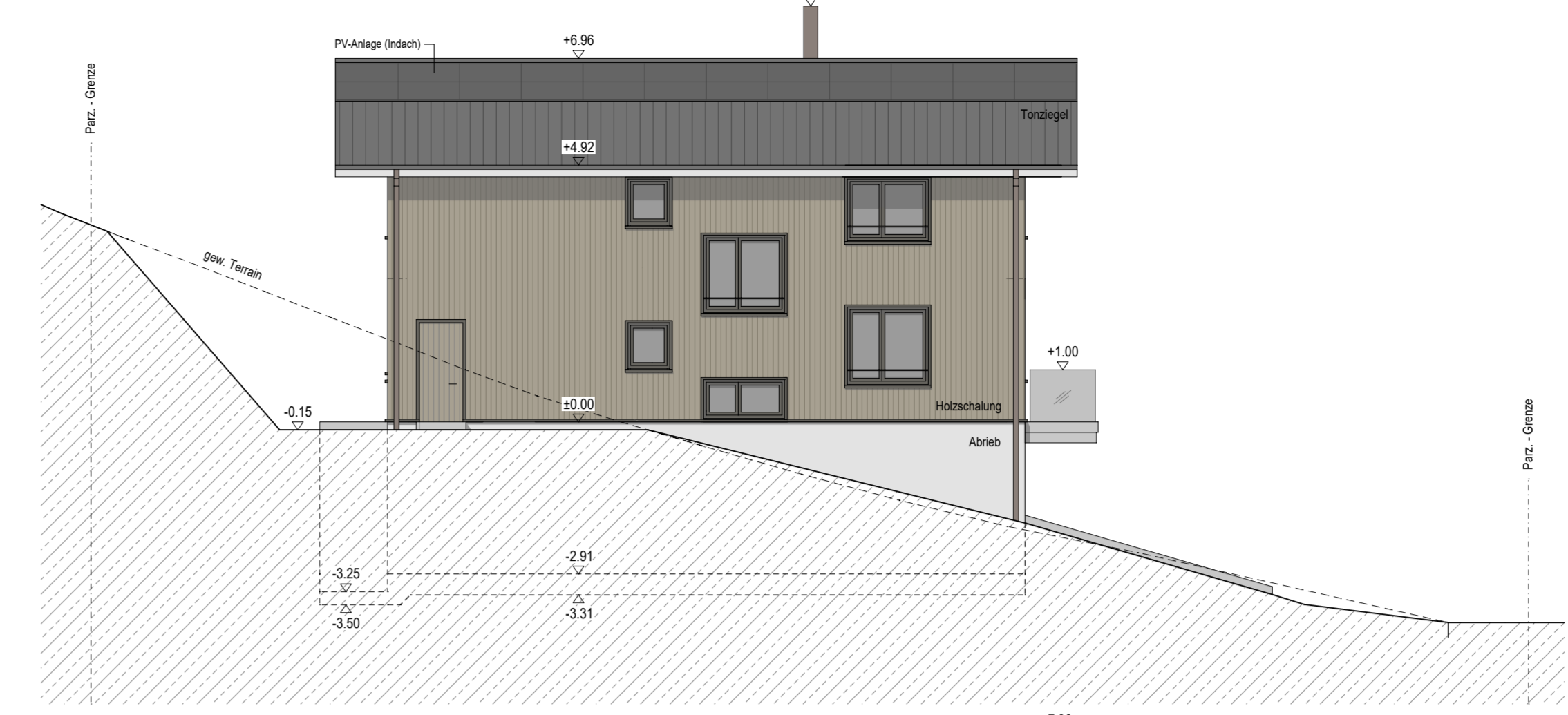
Längsschnitt A-A



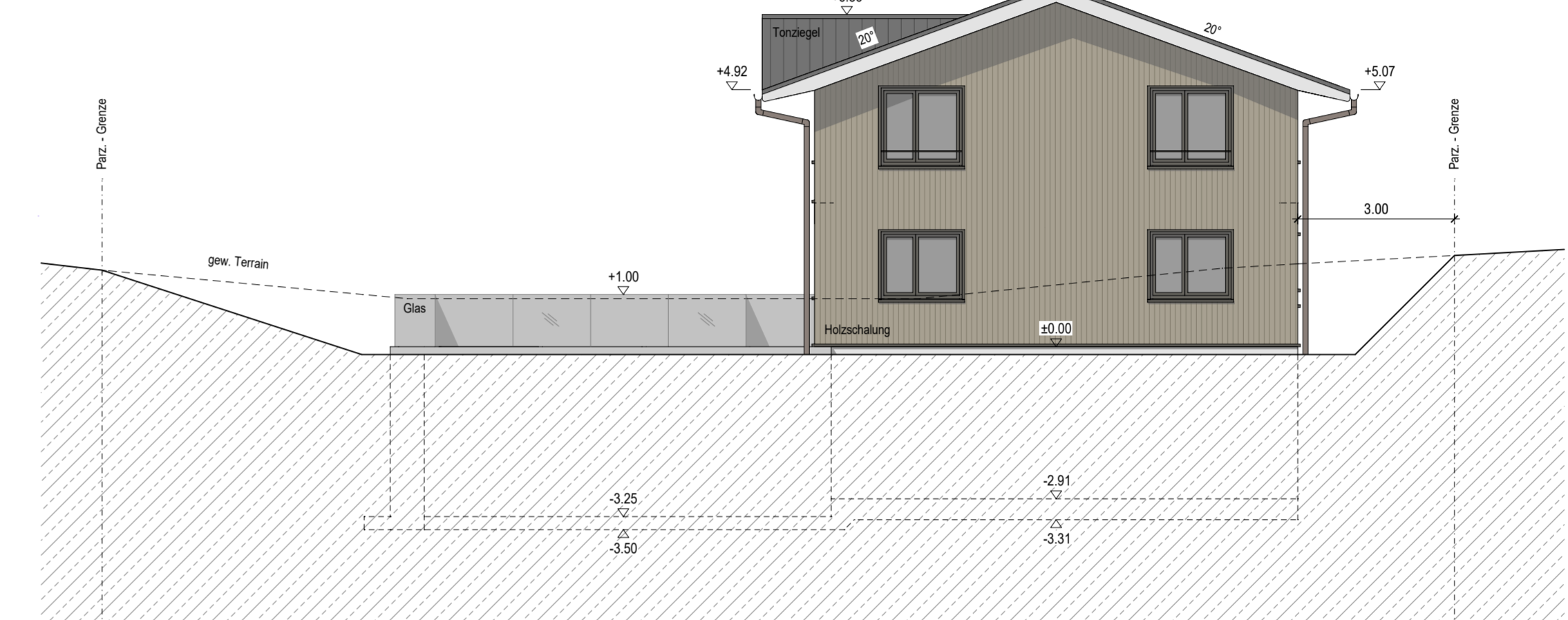
Untergeschoss



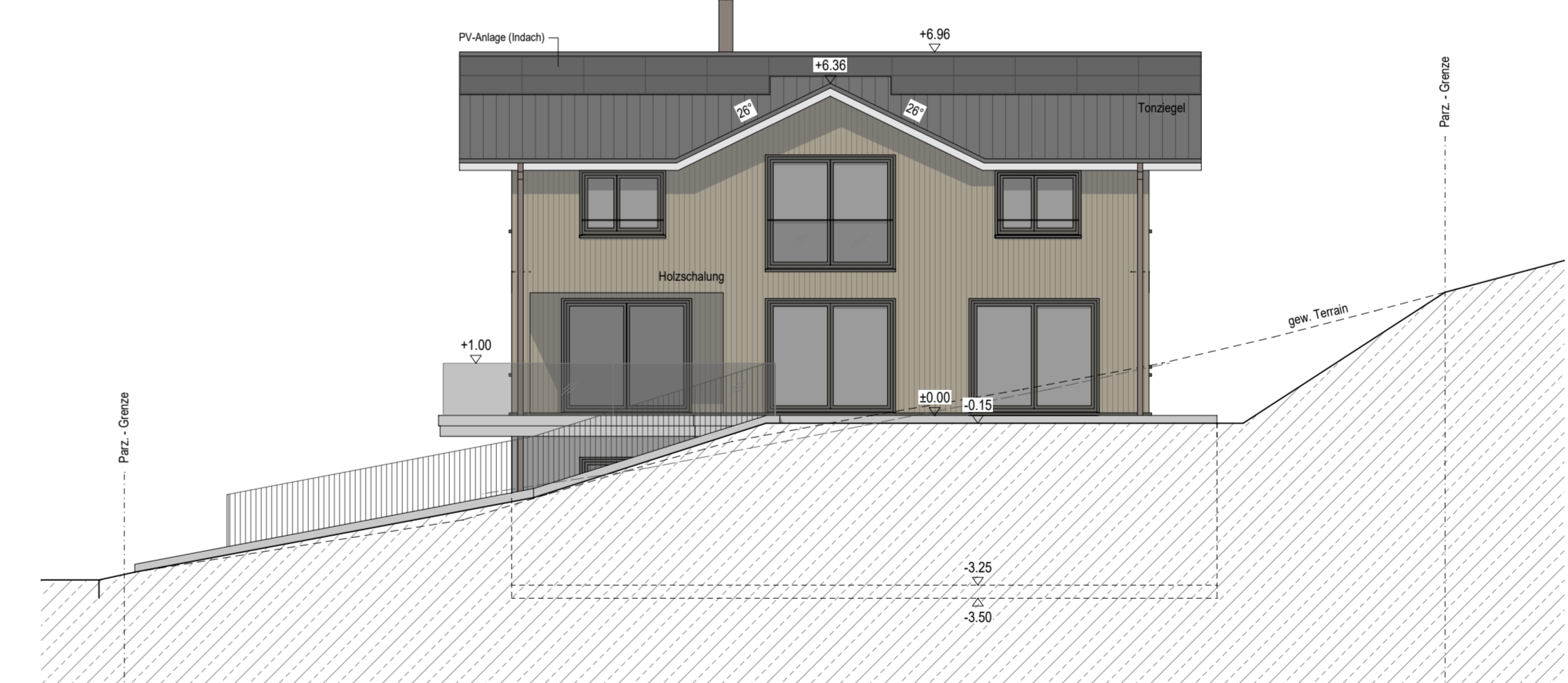
Querschnitt B-B



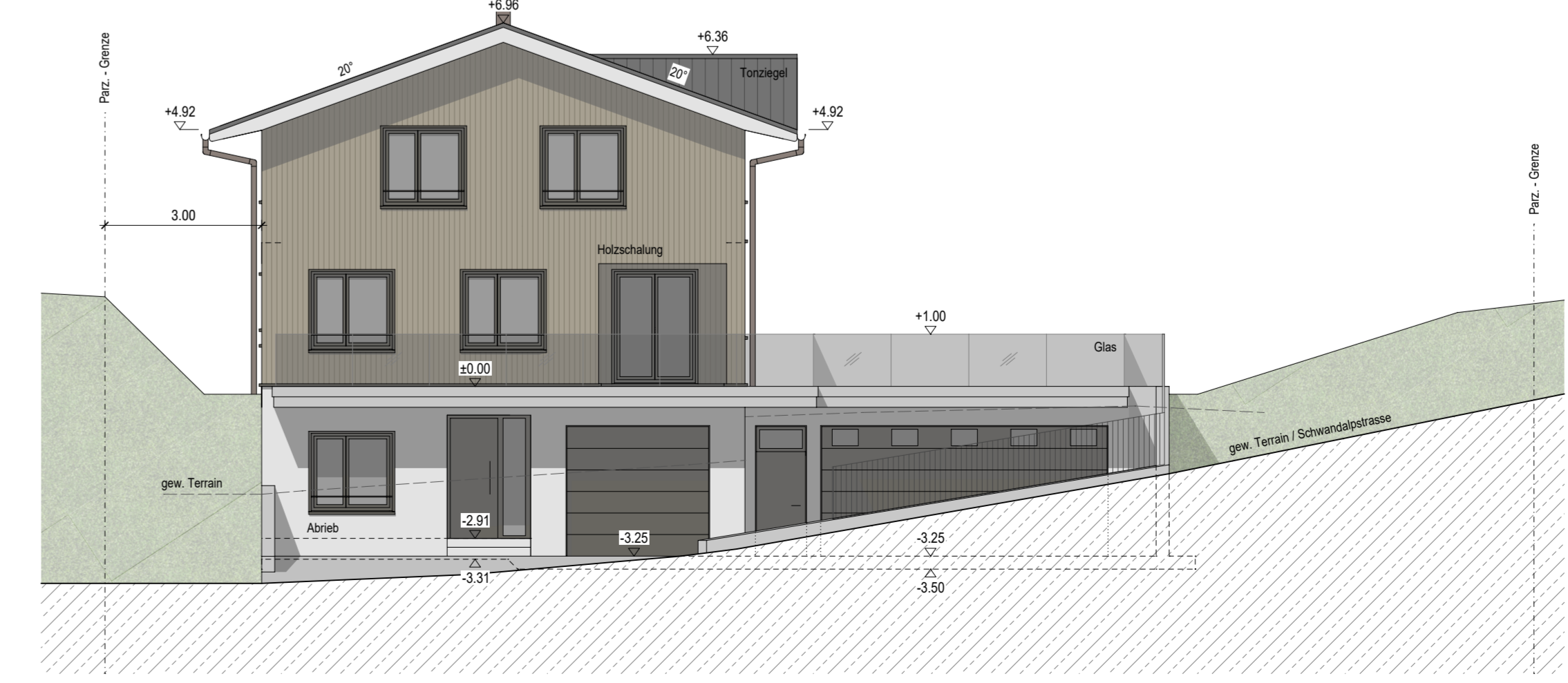
Nordfassade



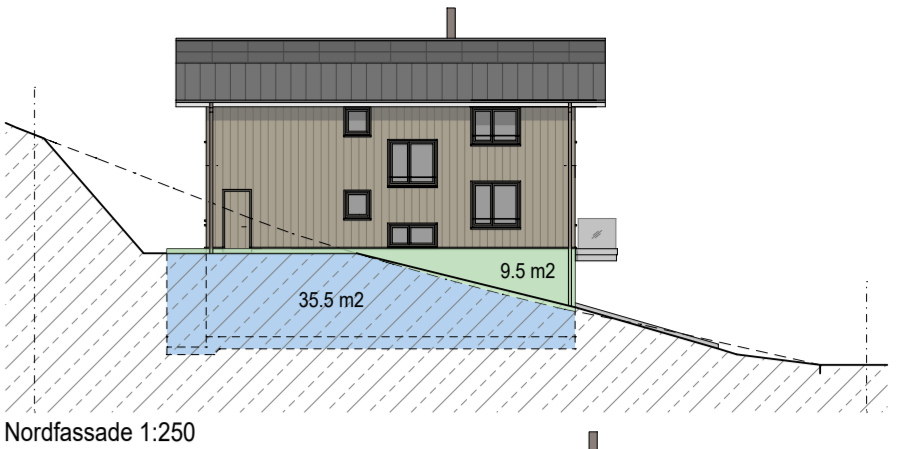
Ostfassade



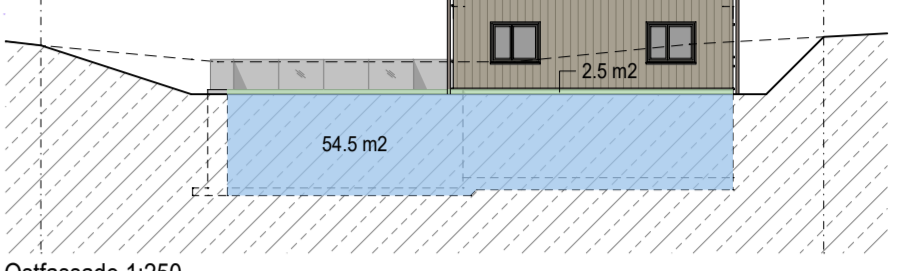
Südfassade



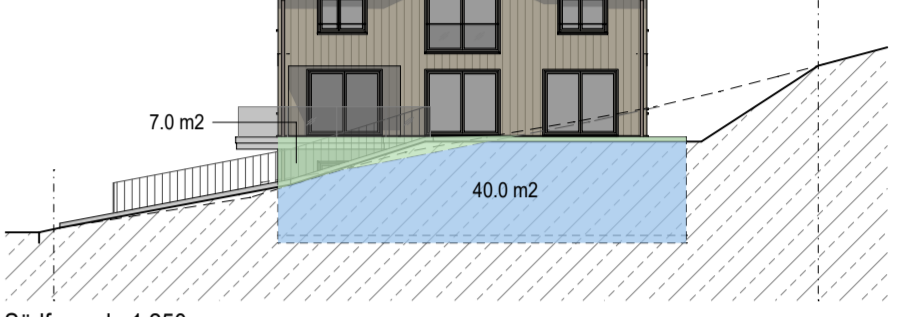
Westfassade



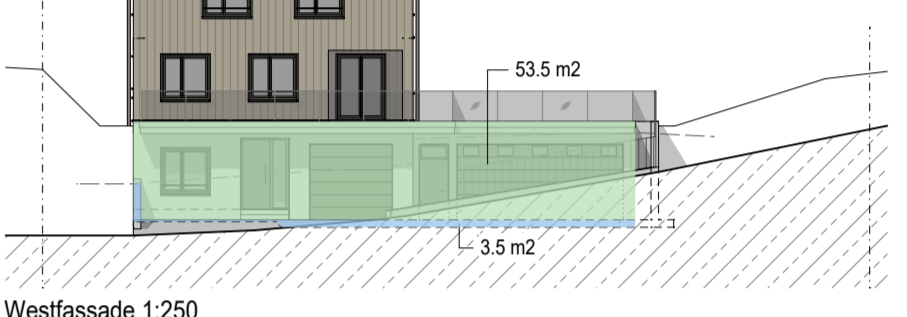
Nordfassade 1:250



Ostfassade 1:250

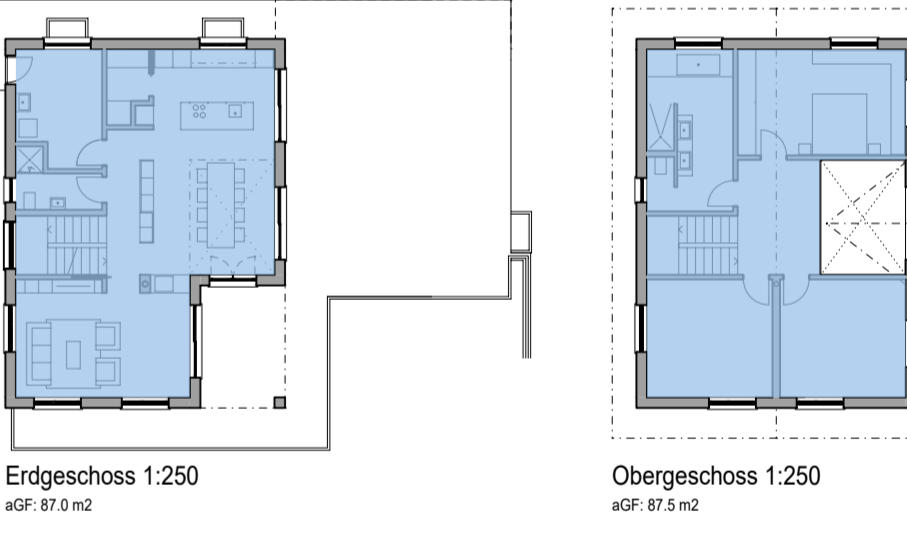


Südfassade 1:250

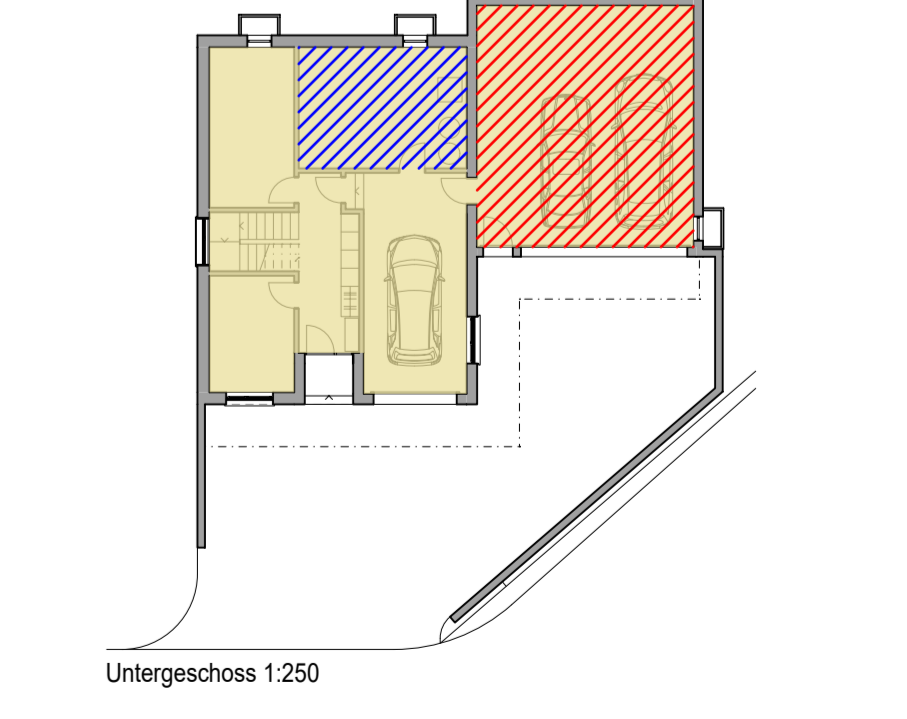


Westfassade 1:250

Nachweis Vollgeschosse
 Gesamfläche UG 206.0 m²
 Fläche unter Terrain 133.5 m²
 100 % / 206 m² * 135.0 m² = 64.8% > 33% =>
 Untergeschoss zählt **nicht** als Vollgeschoss



Berechnung aGF
 aGF Untergeschoss 0.0 m²
 aGF Erdgeschoss 87.0 m²
 aGF Obergeschoss 87.5 m²
Total aGF 174.5 m²
 aGF Parzelle (gem. GP Sagelboden) 175.0 m²
 Reserve 0.5 m²



Nachweis max. Fläche Untergeschoss

Fläche UG total	151.4 m ²
Technikraum	-22.2 m ²
Fläche UG anrechenbar	72.1 m ²
110% von o VG (87.3 m ² * 1.10)	96.0 m ²
Reserve	23.9 m ²